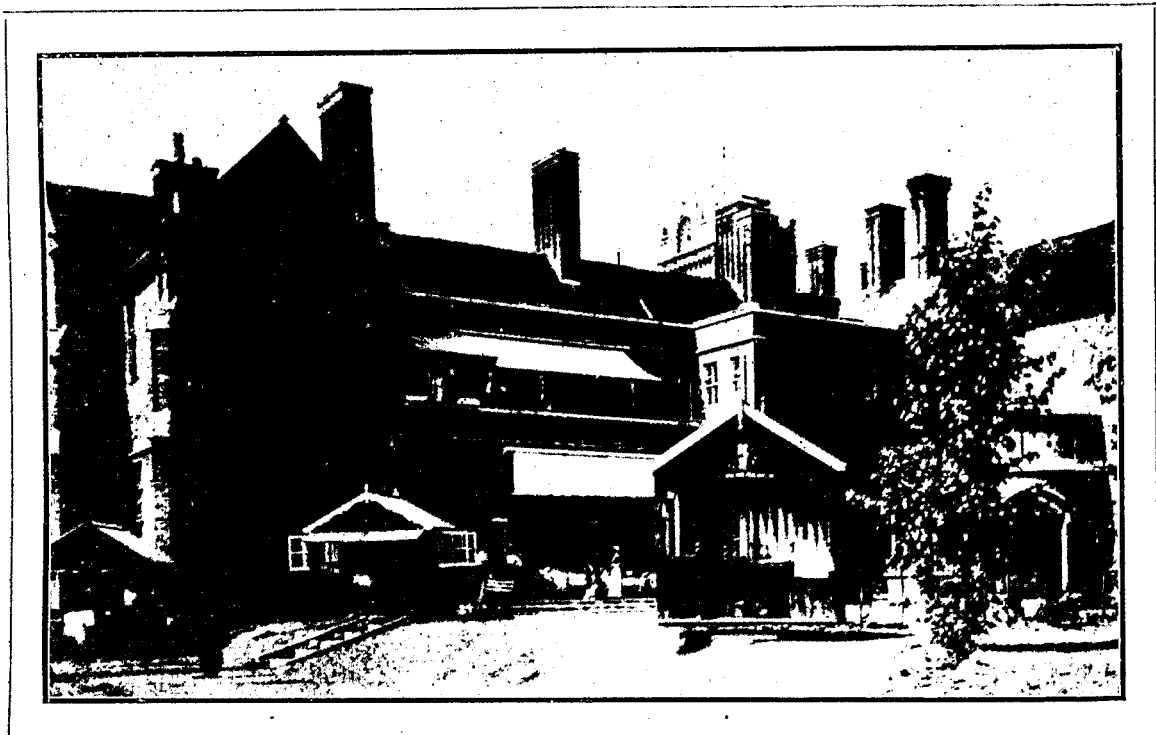


THE HOSPITAL WORLD.

ST. PETER'S HOME, WOKING.

St. Peter's Home, Woking, one of the works of the Community of the St. Peter's Sisters, Mortimer Road, Kilburn, is a delightful institution situated amongst the pine and heather country of North Hampshire, and overlooking a wide expanse of country. Within direct and easy reach of London, and at the same time in a lovely district notorious for its healthful and invigorating air, it is an ideal place for the treatment of many acute cases, and for the

more like an abbey of olden days than a modern church. It is so arranged that patients both on the ground and first floor can easily be wheeled or carried to the services, and it is evident that it is highly appreciated by them. The choir is occupied by the Sisters, but nave, transepts, aisles and gallery afford ample accommodation for the needs of the patients. The Home should be widely known and widely supported, for it is carrying on a good work, the benefits of which extend far and wide. As the advantage of removing sick and injured people out of the great cities into the life-



ST. PETER'S HOME, WOKING, WITH SHELTERS.

care of the more chronic class of invalids. Our illustration shows the balconies outside two of the wards, and the comfortable shelters in which some of the patients spend their days and nights.

Patients are received both into the general and also into private wards, the payments varying accordingly. They are cared for with the tenderness and devotion which characterise all the work of the Sisterhood, while medically they have the advantage of the attendance of practitioners in the neighbourhood.

One feature of the Home which cannot fail to impress all who see it is its beautiful chapel,

giving air of the open country becomes more and more appreciated, the treatment and care obtainable at such institutions as St. Peter's Home will be increasingly valued.

Queen Amelie recently spent over an hour at the Richmond Hospital, where she was received by the Mayor and senior officials, and accompanied by the matron, Miss Yelverton Dawson. In all the wards Queen Amelie spoke to the nurses and patients, and to everyone was most gracious and kind. The cleanliness, neatness and order everywhere apparent were commented upon with praise.

[previous page](#)

[next page](#)